

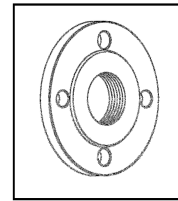


COMPONENTS	MATERIALS
Motor housing, hydraulic part	Grey cast iron
Shaft (pump side)	Stainless steel
Motor side mechanical seal	Carbon - ceramic
Pump side mechanical seal	Silicon carbide
Bolts	A2 stainless steel
Foot support	Galvanize iron
Gaskets (O-Ring)	NBR rubber
Grinder	Treated stainless steel

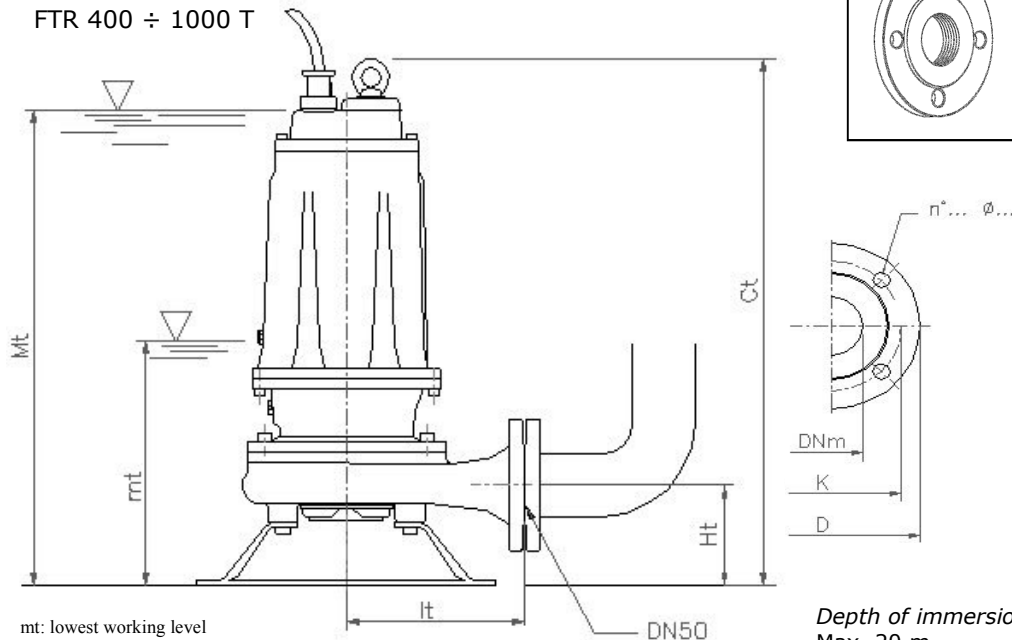
CHARACTERISTICS	
Electric motor	Asynchronous, oil immersed
Liquid temperature	0 - 40 °C
Insulation Class	F
Protection	IP 68
Cable	10 m. - H07 RNF

ACCESSORIES:

Counterflange



Mobile installation
FTR 400 ÷ 1000 T



mt: lowest working level
Mt: lowest level for continuous duty

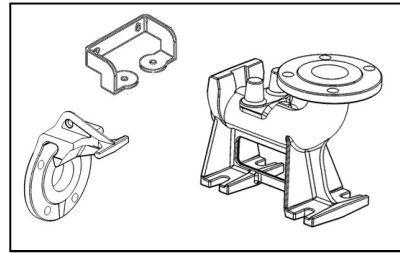
Depth of immersion:
Max 20 m

TYPE	DIMENSIONS (mm)					Flange UNI PN 10			Weight Kg
	Ct	Ht	It	mt	Mt	DNm	K	D	
FTR 400 T	595	112	190	265	550	50	125	165	58
FTR 550 T	595	112	190	265	550	50	125	165	66
FTR 750 T	680	160	250	280	630	65	145	185	94
FTR 1000 T	680	160	250	280	630	65	145	185	97

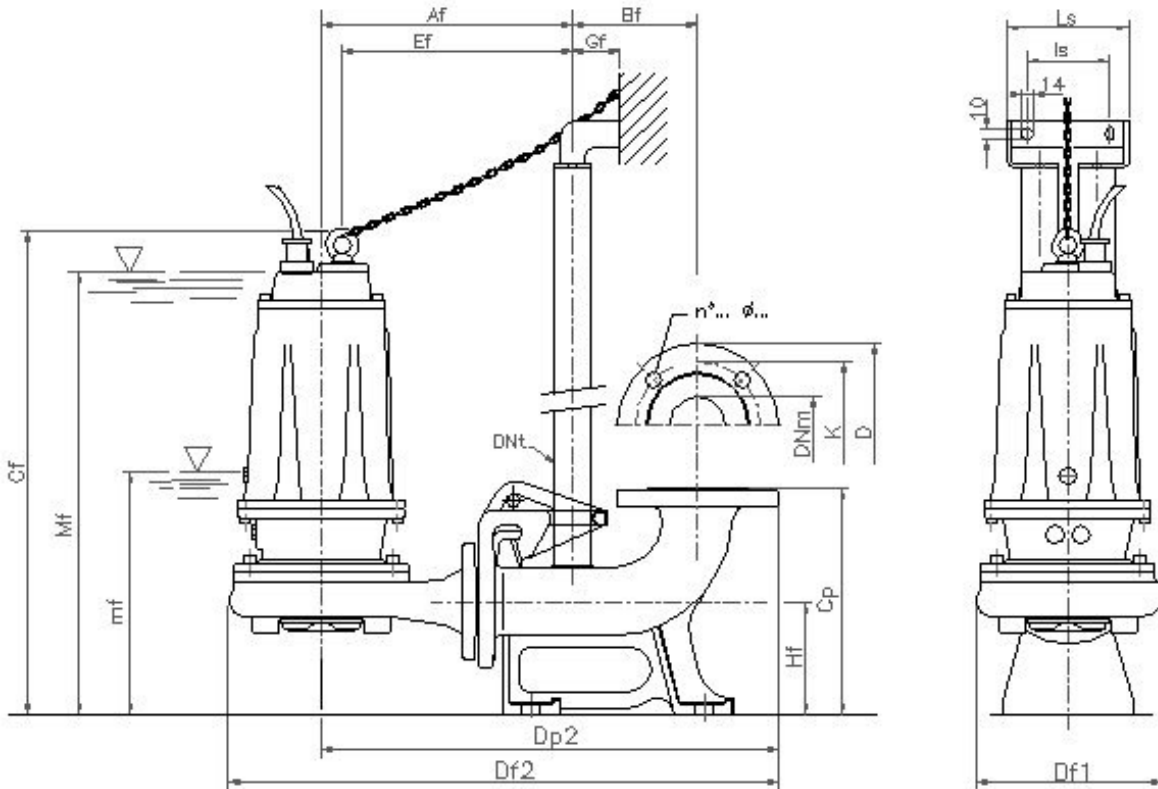
WITH GRINDER

ACCESSORIES:

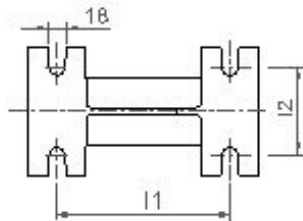
Quick coupling kit



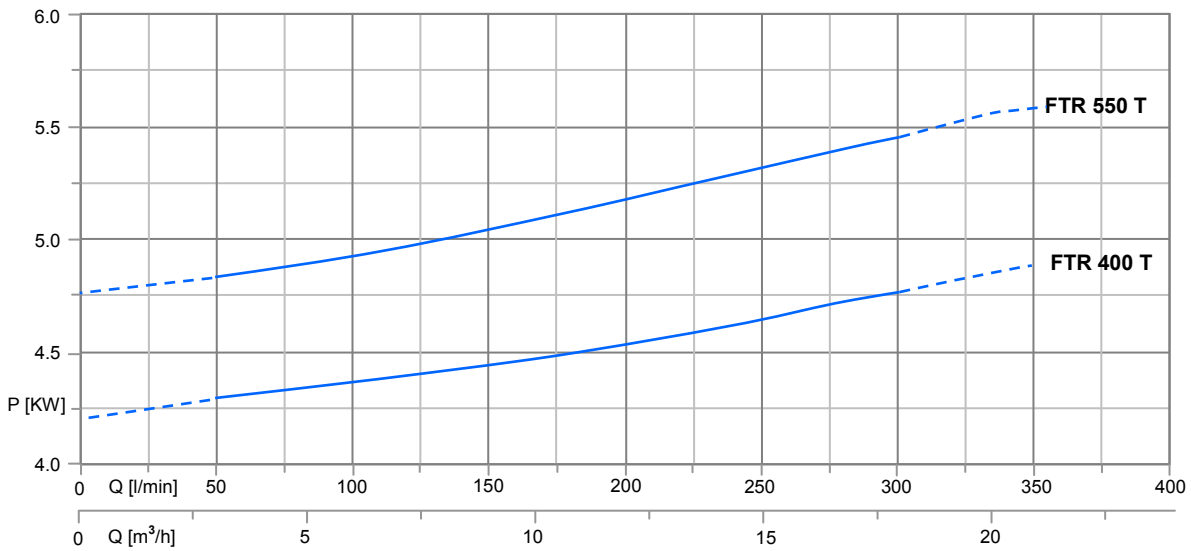
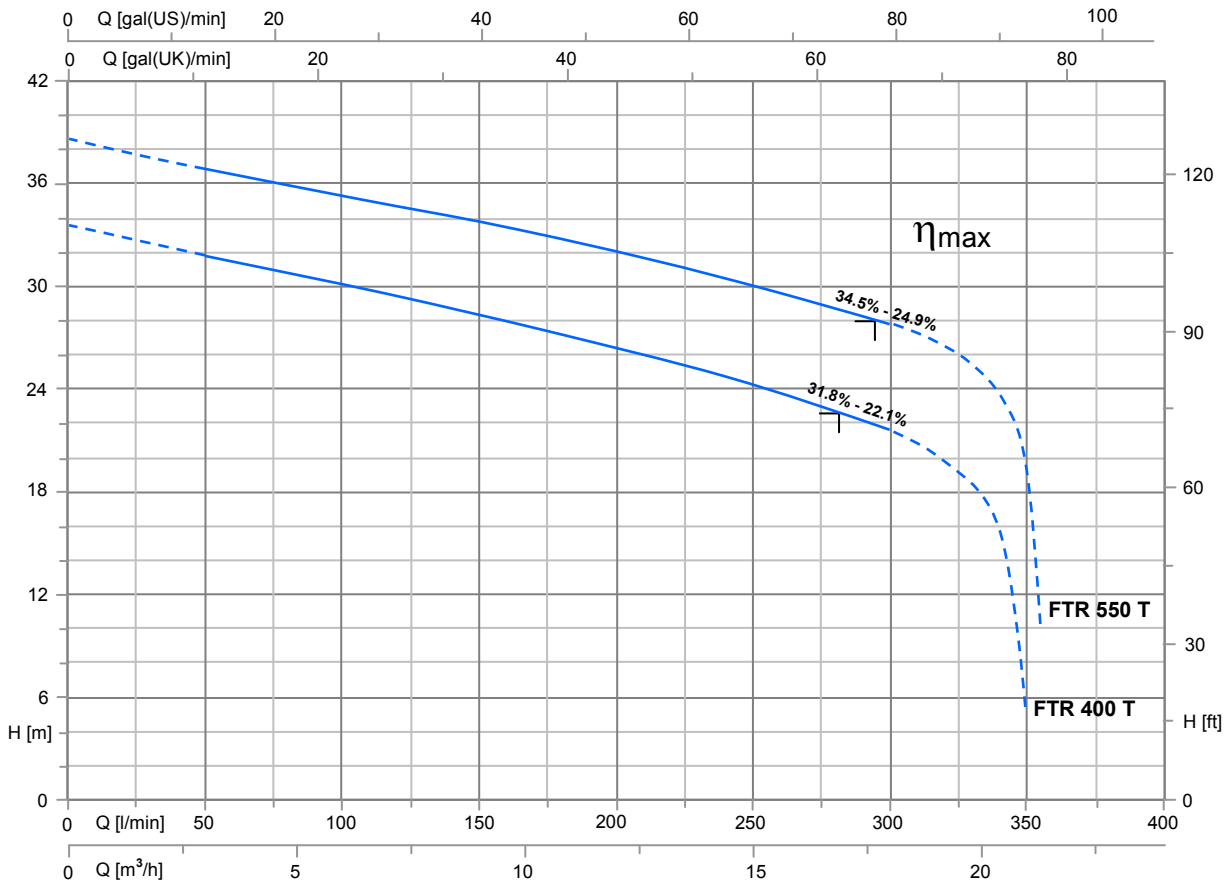
Fixed installation with quick coupling kit
FTR 400 ÷ 1000/ P T



mf: lowest working level
Mf: lowest level for continuous duty

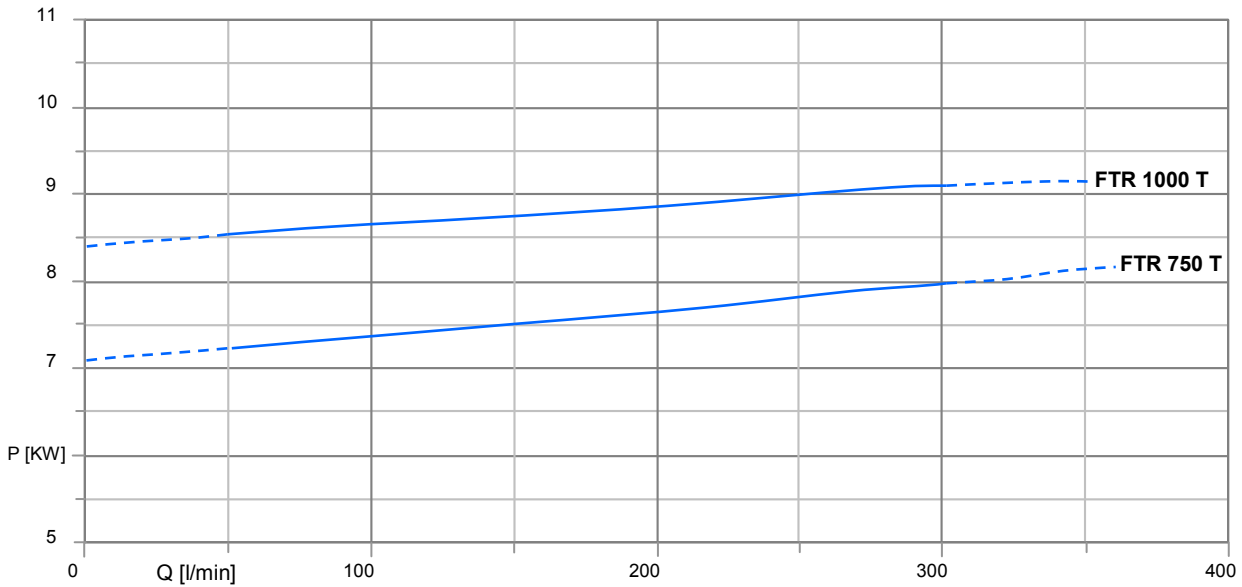
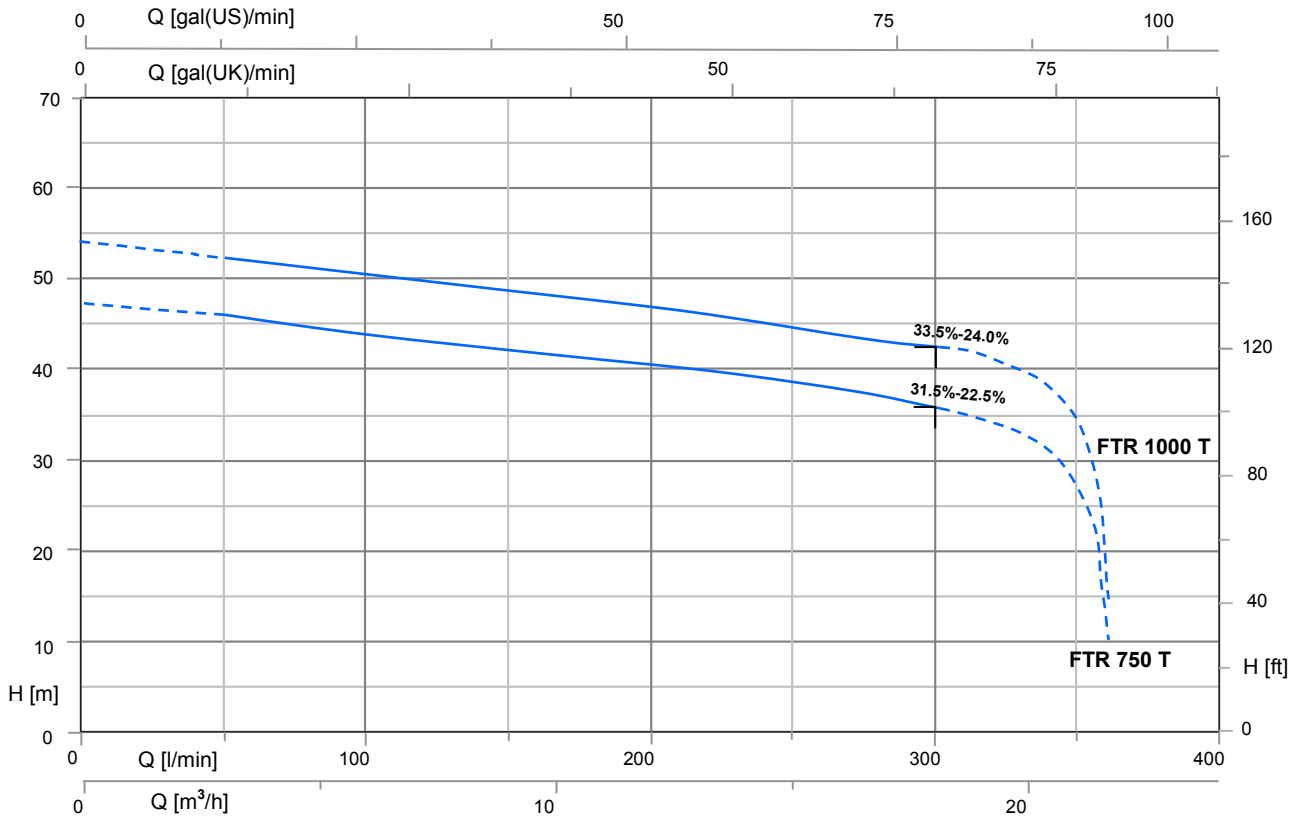


TYPE	DIMENSIONS (mm)															Flange UNI PN 10				
	Af	Bf	Cf	Cp	Df1	Df2	Dp2	DNt	Ef	Gf	Hf	l1	l2	ls	Ls	mf	Mf	DNm	K	D
FTR 400/ P T	535	145	614	260	237	654	535	1" 1/4	266	55	130	200	200	95	140	290	566	50	125	165
FTR 550/ P T	535	145	614	260	237	654	535	1" 1/4	266	55	130	200	200	95	140	290	566	50	125	165
FTR 750/ P T	566	145	656	260	279	724	566	1" 1/4	294	55	130	200	200	95	140	290	600	65	145	185
FTR 1000/ P T	566	145	656	260	279	724	566	1" 1/4	294	55	130	200	200	95	140	290	600	65	145	185



TYPE	P ₂		P ₁ (kW)	A	Q (m ³ /h - l/min)						
					0	3	6	9	12	15	18
3~					0	50	100	150	200	250	300
3 x 400 V - 50 Hz	(HP)	(kW)	3~	3x400V 50Hz	H (m)						
FTR 400 T	4	3	4.5	7.5	33.5	31.8	30.1	28.5	26.4	24.4	21.6
FTR 550 T	5.5	4	5.3	9.2	38.6	36.9	35.3	33.9	32.1	30.1	27.6

∩ : η_{max} Max hydraulic efficiency and respective total efficiency



TYPE	P ₂		P ₁ (kW)	A	Q (m ³ /h - l/min)																	
					0	3	6	9	12	15	18	21	21.6	0	50	100	150	200	250	300	350	360
3~			3~	3x400V 50Hz	H (m)																	
400 / 690 V - 50 Hz	(HP)	(kW)			47.8	46.2	44.5	42.7	40.8	38.9	36.1	26.7	11.0	54.6	52.7	51	49.2	47.1	45.1	42.7	34.0	15
FTR 750 T	7.5	5.5	8.0	13.9																		
FTR 1000 T	10	7.5	9.1	15.5																		

⌋ : η max Max hydraulic efficiency and respective total efficiency